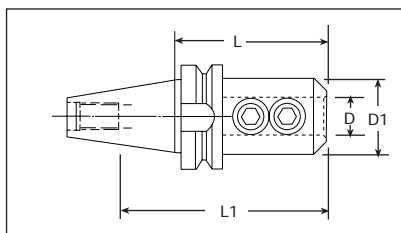


## BT END MILL HOLDERS



		Part No.	D	D1	L	L1	Ret. Knob Thread
<b>BT 40</b>	STUB LENGTH	B40SE0500	0.500	1.75	1.75	3.18	M16 X 2
		B40SE0625	0.625	1.75	1.75	3.18	M16 X 2
		B40SE0750	0.750	1.75	1.75	2.35	M16 X 2
		B40SE1000	1.000	1.75	1.75	2.35	M16 X 2
		B40SE1250	1.250	2.25	2.00	2.35	M16 X 2

		Part No.	D	D1	L	L1	Ret. Knob Thread
	STANDARD LENGTH	B40E0125	0.1250	0.68	2.50	3.00	M16 X 2
		B40E0187	0.1875	0.68	2.50	3.00	M16 X 2
		B40E0250	0.2500	0.75	2.50	2.62	M16 X 2
		B40E0312	0.3125	0.75	2.50	2.62	M16 X 2
		B40E0375	0.3750	1.00	2.50	2.56	M16 X 2
		B40E0437	0.4375	1.13	2.50	2.56	M16 X 2
		B40E0500	0.5000	1.13	2.62	3.06	M16 X 2
		B40E0625	0.6250	1.50	3.75	4.24	M16 X 2
		B40E0750	0.7500	1.75	3.75	4.00	M16 X 2
		B40E0875	0.8750	2.00	4.00	4.31	M16 X 2
		B40E1000	1.0000	2.00	4.00	4.25	M16 X 2
		B40E1250	1.2500	2.50	4.25	2.31	M16 X 2
		B40E1500	1.5000	2.75	4.62	2.75	M16 X 2

		Part No.	D	D1	L	L1	Ret. Knob Thread
<b>BT 50</b>	STANDARD LENGTH	B50E0375	0.375	1.00	3.00	4.00	M 24 X 3
		B50E0500	0.500	1.25	3.00	4.00	M 24 X 3
		B50E0625	0.625	1.50	3.00	4.00	M 24 X 3
		B50E0750	0.750	1.75	3.00	4.00	M 24 X 3
		B50E0875	0.875	1.88	4.00	4.18	M 24 X 3
		B50E1000	1.000	2.00	4.00	4.44	M 24 X 3
		B50E1250	1.250	2.50	4.00	2.75	M 24 X 3
		B50E1500	1.500	2.62	4.62	3.50	M 24 X 3
		B50E2000	2.000	3.75	5.25	3.50	M 24 X 3