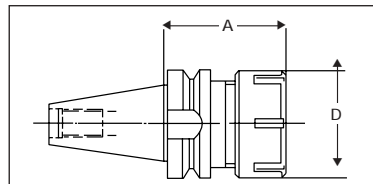


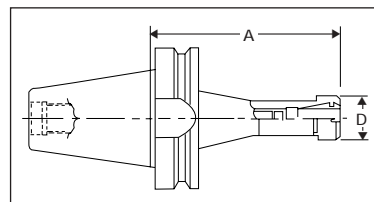
## BT RD/ER COLLET CHUCKS



Retention knobs  
sold separately.

### STANDARD LENGTH

	Part No.	Taper	A		D		Ret. Knob Threading	Nut Style/Part No.	Wrench Part No.
			(mm.)	(in.)	(mm.)	(in.)			
RD 16	1614016	BT 30	70	2.76	22	0.87	M12	H-30116	22325
	1624016	BT 35	70	2.76	28	1.10	M12	H-30116	22325
	1634800	BT 40	70	2.76	28	1.10	M16	H-30116	22325
RD 20	1614020	BT 30	70	2.76	34	1.34	M12	H-30120	22330
	1624020	BT 35	70	2.76	34	1.34	M12	H-30120	22330
	1634801	BT 40	70	2.76	34	1.34	M16	H-30120	22330
RD 25	1614025	BT 30	60	2.36	42	1.65	M12	E-30125	22125
	1624025	BT 35	60	2.36	42	1.65	M12	E-30125	22125
	1634025	BT 40	70	2.76	42	1.65	M16	E-30125	22125
RD 32	1614532	BT 30	70	2.76	50	1.97	M12	E-30132	22132
	1624032	BT 35	70	2.76	50	1.97	M12	E-30132	22132
	1634802	BT 40	70	2.76	50	1.97	M16	E-30132	22132
RD 40	1634803	BT 40	80	3.15	63	2.48	M16	E-30140	22140
	1644851	BT 45	80	3.15	63	2.48	M20	E-30140	22140
	1654804	BT 50	80	3.15	63	2.48	M24	E-30140	22140
RD 50	1644852	BT 45	80	3.15	78	3.07	M20	E-30150	22150
	1654852	BT 50	80	3.15	78	3.07	M24	E-30150	22150



Retention knobs  
sold separately.

### EXTENDED LENGTH

	Part No.	Taper	A		D		Ret. Knob Threading	Nut Style/Part No.	Wrench Part No.
			(mm.)	(in.)	(mm.)	(in.)			
RD 16	1614516	BT 30	120	4.73	22	0.87	M12	M-30016	22016
	1624516	BT 35	120	4.73	22	0.87	M12	M-30016	22016
	1634516	BT 40	125	4.93	22	0.87	M16	M-30016	22016
	1644516	BT 45	125	4.93	22	0.87	M20	M-30016	22016
	1654516	BT 50	135	5.32	22	0.87	M24	M-30016	22016
RD 20	1624520	BT 35	135	5.32	28	1.10	M12	M-30020	22020
	1634520	BT 40	135	5.32	28	1.10	M16	M-30020	22020
	1654520	BT 50	135	5.32	28	1.10	M24	M-30020	22020
RD 25	1634425	BT 40	135	2.76	28	1.10	M12	M-30025	22020
RD 32	1624132	BT 35	100	3.94	50	1.97	M12	E-30132	22132
	1634810	BT 40	100	3.94	50	1.97	M16	E-30132	22132
RD 50	1654805	BT 50	100	3.94	78	3.07	M24	E-30150	22150

Balanced to 22,000 RPM upon request.  
Wrenches are sold separately.