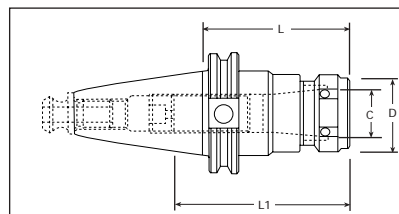


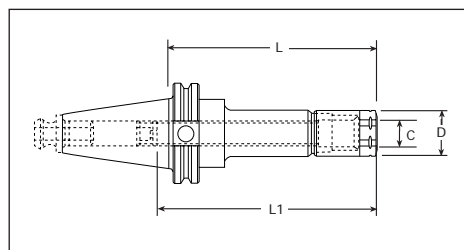
CAT (V-Flange) RDG/TG COLLET CHUCKS



Retention knob
sold separately.

| | Part No. | Collet Series | C Capacity | D | L | L1 | Nut Style/ Part No. |
|--------|---------------|---------------|------------|------|------|------|------------------------|
| CAT 40 | C40RDG075 | RDG75 | 3/4" | 2.10 | 2.75 | 3.31 | E-30476 |
| | C40RDG100 | RDG100 | 1" | 2.44 | 3.00 | 3.68 | E-30400 |
| | C40RDG150 | RDG150 | 1-1/2" | 3.25 | 4.88 | 5.56 | E-30480 |
| | C40RDGEX100 | RDG100 | 1" | 2.44 | 4.00 | 4.68 | E-30400 |
| | C40RDGEEEX100 | RDG100 | 1" | 2.44 | 5.50 | 5.68 | E-30400 |
| | C40RDGEEEX100 | RDG100 | 1" | 2.44 | 6.50 | 7.18 | E-30400 |
| CAT 50 | C50RDG100 | RDG100 | 1" | 2.44 | 3.00 | 4.50 | E-30400 |
| | C50RDGEX100 | RDG100 | 1" | 2.44 | 5.50 | 7.00 | E-30400 |
| | C50RDGEEEX100 | RDG100 | 1" | 2.44 | 7.50 | 9.00 | E-30400 |
| | C50RDG150 | RDG150 | 1-1/2" | 3.43 | 3.00 | 4.50 | E-30480 |

CAT (V-Flange) RDA/DA COLLET CHUCKS



Retention knob
sold separately.

| | Part No. | Collet Series | C Capacity | D | L | L1 | Nut |
|--------|------------|---------------|------------|-------|------|------|-------|
| CAT 40 | C40RDA100 | RDA100 | 9/16" | 1.06 | 3.00 | 3.00 | 20100 |
| | C40RDA180 | RDA180 | 3/4" | 1.42 | 3.00 | 2.75 | 20180 |
| | C40RDAE180 | RDA180 | 3/4" | 1.42 | 5.00 | 2.75 | 20180 |
| | C40RDA200 | RDA200 | 3/8" | 1.125 | 3.00 | 3.00 | 20200 |
| | C40RDAE200 | RDA200 | 3/8" | 1.125 | 5.00 | 3.00 | 20200 |
| | C40RDA300 | RDA300 | 1/4" | 0.81 | 3.00 | 3.82 | 20300 |
| CAT 50 | C50RDA100 | RDA100 | 9/16" | 1.06 | 3.00 | 3.00 | 20100 |
| | C50RDAE100 | RDA100 | 9/16" | 1.06 | 6.00 | 3.00 | 20100 |
| | C50RDA180 | RDA180 | 3/4" | 1.44 | 3.00 | 4.04 | 20180 |
| | C50RDAE180 | RDA180 | 3/4" | 1.44 | 6.00 | 4.04 | 20180 |