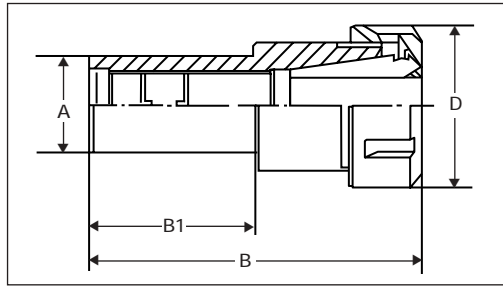


STRAIGHT-SHANK RD/ER COLLET CHUCKS (with Step)



Retention knobs
sold separately.

Wrenches are sold
separately. See page 26.

	Part No.	A		B		B1		D		Nut Style/ Part No.	Wrench
		(mm.)	(in.)	(mm.)	(in.)	(mm.)	(in.)	(mm.)	(in.)		
RD 11	71145	7	0.28	58	2.28	45	1.77	16	0.63	M-30011	22011
	81156	8	0.31	70	2.76	56	2.20	16	0.63	M-30011	22011
	141154		1/4	58	2.28	45	1.77	16	0.63	M-30011	22011
RD 16	101644	10	0.39	70	2.76	44	1.73	22	0.87	M-30016	22016
	101660	10	0.39	86	3.39	60	2.36	22	0.87	M-30016	22016
	101680	10	0.39	105	4.72	80	3.15	22	0.87	M-30016	22016
	121680	12	0.47	105	4.13	80	3.15	22	0.87	M-30016	22016
	121681	12	0.47	105	4.13	80	3.15	28	1.10	H-30116	22325
	141630	14	0.55	55	2.17	30	1.18	28	1.10	H-30116	22325
	141660	14	0.55	97	3.82	60	2.36	28	1.10	H-30116	22325
	161660	16	0.63	90	3.55	60	2.36	28	1.10	H-30116	22325
	381644		3/8	70	2.76	44	1.73	22	0.87	M-30016	22016
	121654		1/2	168	6.61	154	6.06	22	0.87	M-30016	22016
	581660		5/8	85	3.35	60	2.36	28	1.10	H-30116	22325
	581680		5/8	105	4.13	80	3.15	28	1.10	H-30116	22325
	341650		3/4	79	3.11	50	1.97	28	1.10	H-30116	22325
	341680		3/4	110	4.33	80	3.15	28	1.10	H-30116	22325
341600		3/4	125	4.92	100	3.94	28	1.10	H-30116	22325	
1141600		1-1/4	85	3.35	60	2.36	28	1.10	H-30116	22325	
RD 20	122000	12	0.47	142	5.60	100	3.94	28	1.10	M-30020	22020
	152000	15	0.59	142	5.60	100	3.94	28	1.10	M-30020	22020
	162000	16	0.63	142	5.60	100	3.94	28	1.10	M-30020	22020
	203020	20	0.79	72	2.17	30	1.18	34	1.34	H-30120	22330
	582000		5/8	142	5.60	100	3.94	28	1.10	H-30120	22330
RD 25	202550	20	0.79	85	3.35	50	1.97	42	1.65	E-30125	22125
	202500	20	0.79	135	5.31	100	3.94	42	1.65	E-30125	22125
	252550	25	0.98	85	3.35	50	1.97	42	1.65	E-30125	22125
	252500	25	0.98	135	5.31	100	3.94	42	1.65	E-30125	22125
	582550		5/8	85	3.35	50	1.97	42	1.65	E-30125	22125
	342550		3/4	85	3.35	50	1.97	42	1.65	E-30125	22125
	342500		3/4	135	5.31	100	3.94	42	1.65	E-30125	22125
RD 32	203235	20	0.79	83	3.27	35	1.38	50	1.97	E-30132	22132
	203250	20	0.79	98	3.85	50	1.97	50	1.97	E-30132	22132
	253250	25	0.98	95	3.74	50	1.97	50	1.97	E-30132	22132
	1003250		1	95	3.74	50	1.97	50	1.97	E-30132	22132
	1143250		1-1/4	98	3.85	50	1.97	50	1.97	E-30132	22132
	1143260		1-1/4	108	4.25	60	2.36	50	1.97	E-30132	22132
RD 40	254050	25	0.98	95	3.74	50	1.97	63	2.48	E-30140	22140
	1004050		1	95	3.74	50	1.97	63	2.48	E-30140	22140
	10040238		1	106	4.17	61	2.38	63	2.48	E-30140	22140
	1144060		1-1/4	105	4.13	60	2.36	63	2.48	E-30140	22140