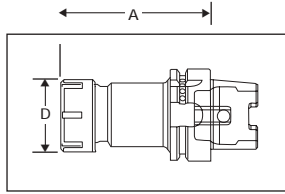


## RD/ER HSK COLLET CHUCKS



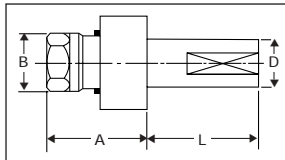
Part No.	D		A		Nut Style/ Part No.	Wrench
	(mm.)	(in.)	(mm.)	(in.)		
HSK63ARD16	22	0.87	100	3.94	M-30016	22016
HSK63ARD20	35	1.38	100	3.94	E-30127	22120
HSK63ARD25	42	1.65	100	3.94	E-30125	22125
HSK63ARD32	50	1.97	100	3.94	E-30132	22132
HSK63ARD40	63	2.48	120	4.73	E-30140	22140



Retention knobs  
sold separately.

Wrenches are sold  
separately. See page 26.

## RD/ER FLOATING REAMER HOLDERS



### STRAIGHT-SHANK

	Part No.	D		L		A		B		Float		Nut Style/ Part No.	Wrench
		(mm.)	(in.)	(mm.)	(in.)	(mm.)	(in.)	(mm.)	(in.)	(mm.)	(in.)		
RD 11	160011	16	.63	46	1.81	40	1.57	22	0.86	1	0.04	H-30111	22317
	580011	16	5/8	46	1.81	40	1.57	22	0.86	1	0.04	H-30111	22317
	340011		3/4	46	1.81	40	1.57	22	0.86	1	0.04	H-30111	22317
RD 16	160016	16	0.63	35	1.38	33	1.30	28	1.00	1	0.04	H-30116	22325
	340016		3/4	35	1.38	33	1.30	28	1.00	1	0.04	H-30116	22325
	100016		1	35	1.38	33	1.30	28	1.10	1	0.04	H-30116	22325
RD 20	200020	20	0.79	46	1.81	48	1.89	34	1.34	1	0.04	H-30120	22330
	250020	25	0.98	50	1.97	48	1.89	34	1.34	1	0.04	H-30120	22330
	340020		3/4	50	1.97	48	1.89	34	1.34	1	0.04	H-30120	22330
	100020		1	50	1.97	48	1.89	34	1.34	1	0.04	H-30120	22330
RD 25	250025	25	0.98	50	1.97	58	2.28	42	1.65	1	0.04	E-30125	22125
	320025	32	1.26	50	1.97	58	2.28	42	1.65	1	0.04	E-30125	22125
	100025		1	50	1.97	58	2.28	42	1.65	1	0.04	E-30125	22125
	1140025		1-1/4	50	1.97	58	2.28	42	1.65	1	0.04	E-30125	22125
RD 32	250032	25	0.98	50	1.97	58	2.28	50	1.97	1	0.04	E-30132	22132
	300032	30	1.18	50	1.97	58	2.28	50	1.97	1	0.04	E-30132	22132
	320032	32	1.26	50	1.97	58	2.28	50	1.97	1	0.04	E-30132	22132
	400032	40	1.57	50	1.97	58	2.28	50	1.97	1	0.04	E-30132	22132
	100032		1	50	1.97	58	2.28	50	1.97	1	0.04	E-30132	22132
	1140032		1-1/4	50	1.97	58	2.28	50	1.97	1	0.04	E-30132	22132

Retention knobs  
sold separately.

Wrenches are sold  
separately. See page 26.