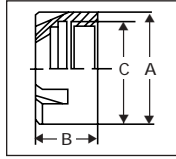


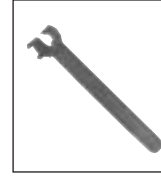
CLAMPING NUTS & WRENCHES

MINI NUTS



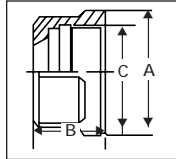
Part No.	Type	A		B		C
		(mm.)	(in.)	(mm.)	(in.)	
30008	RD 8 M	12	0.47	10.8	0.42	M10 X 0.75
30011	RD 11 M	16	0.63	11.3	0.44	M13 X 0.75
30016	RD 16 M	22	0.87	17	0.67	M19 X 1
30020	RD 20 M	28	1.10	19	0.75	M24 X 1
30025	RD 25 M	35	1.38	20	0.79	M30 X 1

MINI WRENCH



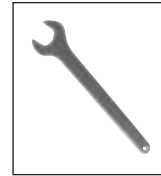
Part No.	Type
22008	E 8 M
22011	E 11 M
22016	E 16 M
22020	E 20 M
22025	E 25 M

HEX NUTS



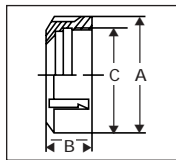
Part No.	Type	A		B		C
		(mm.)	(in.)	(mm.)	(in.)	
30111	UM/RD 11	19	0.75	11.3	0.44	M14 X 0.75
30112	UM/RD 12	19	0.75	12.5	0.49	M14 X 0.75
30116	UM/RD 16	28	1.10	17	0.67	M22 X 1.5
30120	UM/RD 20	34	1.34	19	0.75	M25 X 1.5

HEX WRENCH



Part No.	Type
22317	GS 17
22317	GS 17
22325	GS 25
22330	GS 30

"E" NUT



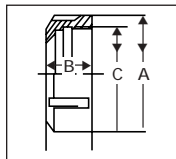
Part No.	Type	A		B		C
		(mm.)	(in.)	(mm.)	(in.)	
30126	UX/RD 16	32	1.26	17.5	0.69	M22 X 1.5
30127	UX/RD 20	35	1.38	18.5	0.73	M25 X 1.5
30125	UM/RD 25	42	1.65	20	0.79	M32 X 1.5
30132	UM/RD 32	50	1.97	22	0.87	M40 X 1.5
30140	UM/RD 40	63	2.48	25	0.98	M50 X 1.5
30150	UM/RD 50	78	2.07	35	1.38	M64 X 2

"E" WRENCH



Part No.	Type
22116	E 16
22120	E 20
22125	E 25
22132	E 32
22140	E 40
22150	E 50

BALL-BEARING NUTS



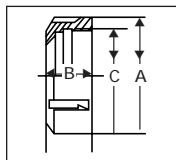
Part No.	Type	A		B		C
		(mm.)	(in.)	(mm.)	(in.)	
30216	KM/RD 16	29	1.14	17.5	0.69	M22 X 1.5
30220	KM/RD 20	34	1.34	18.5	0.73	M25 X 1.5
30225	KM/RD 25	42	1.65	20	0.79	M32 X 1.5
30232	KM/RD 32	50	1.97	22	0.87	M40 X 1.5
30240	KM/RD 40	63	2.48	25	0.98	M50 X 1.5
30250	KM/RD 50	78	3.07	35	1.38	M64 X 2

"E" WRENCH



Part No.	Type
22125	E 25
22132	E 32
22140	E 40
22150	E 50

HIGH-SPEED NUTS



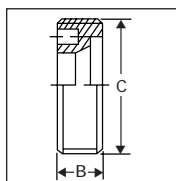
Part No.	Type	A		B		C
		(mm.)	(in.)	(mm.)	(in.)	
30716	HS/RD 16	30	1.18	17	0.67	M22 X 1.5
30720	HS/RD 20	34	1.34	19	0.75	M25 X 1.5
30725	HS/RD 25	42	1.65	20	0.79	M32 X 1.5
30732	HS/RD 32	50	1.97	22.3	0.87	M40 X 1.5
30740	HS/RD 40	63	2.48	25.3	1.00	M50 X 1.5

"E" WRENCH



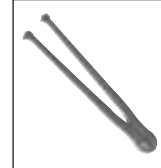
Part No.	Type
22125	E 25
22132	E 32
22140	E 40

INTERNAL FIT NUTS



Part No.	Type	A		B		C
		(mm.)	(in.)	(mm.)	(in.)	
0035211	RD 11 A	—	—	8	0.32	M18 X 1
0035216	RD 16 A	—	—	8	0.32	M24 X 1
0035220	RD 20 A	—	—	11	0.43	M28 X 1.5
0035225	RD 25 A	—	—	12.5	0.49	M32 X 1.5
0035232	RD 32 A	—	—	14	0.55	M40 X 1.5

IF WRENCH



Part No.	Type
35443	RD 11 A
35443	RD 16 A
35443	RD 20 A
35444	RD 25 A
35444	RD 32 A