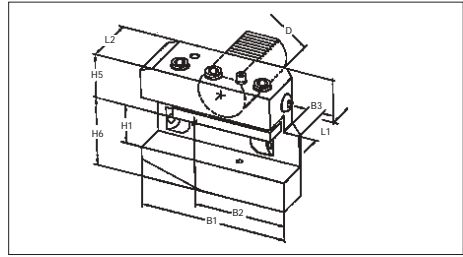


PORTAHERRAMIENTAS SUPERIORES RADIALES LARGOS
PER VDI 3425 DIN 69880

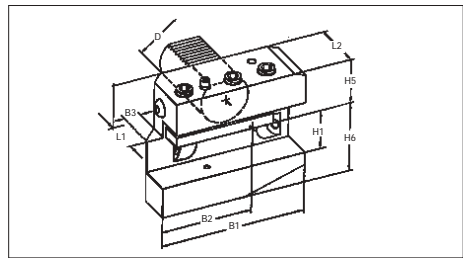
Forma B5 largo, del lado derecho

Part No.	D	B1	B2	B3	H1	H5	H6	L1	L2
473020	30	100	65	10	3/4"	28	38	22	40
474025	40	118	75.5	12.5	1"	32.5	48	22	44
475032	50	130	80	16	1-1/4"	35	60	30	55



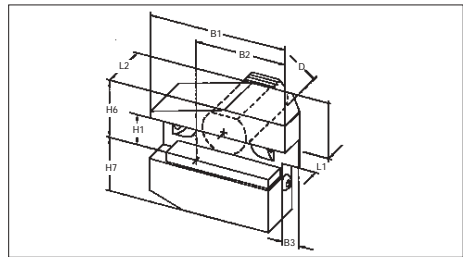
Forma B6 largo, del lado izquierdo

Part No.	D	B1	B2	B3	H1	H5	H6	L1	L2
483020	30	100	65	10	3/4"	28	38	22	40
484025	40	118	75.5	12.5	1"	32.5	48	22	44
485032	50	130	80	16	1-1/4"	35	60	30	55



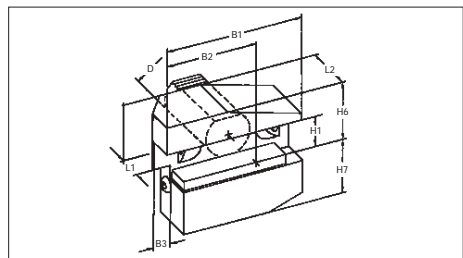
Forma B7 inverso largo, del lado derecho

Part No.	D	B1	B2	B3	H1	H6	H7	L1	L2
493020	30	100	65	10	3/4"	38	35	22	40
494025	40	118	75.5	12.5	1"	48	42.5	22	44
495032	50	130	80	16	1-1/4"	60	50	30	55

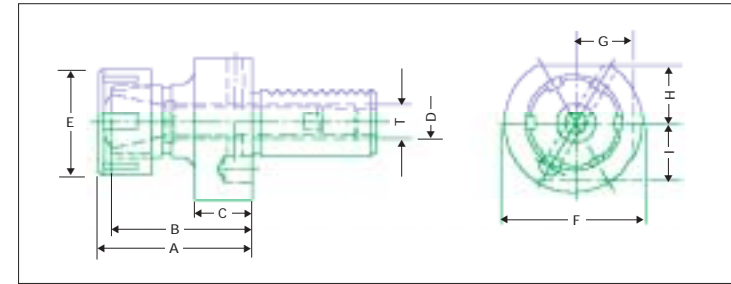


Forma B8 inverso largo, del lado izquierdo

Part No.	D	B1	B2	B3	H1	H6	H7	L1	L2
503020	30	100	65	10	3/4"	38	35	22	40
504025	40	118	75.5	12.5	1"	48	42.5	22	44
505032	50	130	80	16	1-1/4"	60	50	30	55



PORTA BOQUILLAS
PER VDI 3425 DIN 69880



ESTILO RD/ER

Part No.	Description	D	A	B	C	E	F	G	H	I	T	Collet	Range	Wrench
411616*	16x40 RD 16	16	40	30	13	28	40	—	18	18	M 8x1	RD 16	0.5-10	GS 25
411620*	16x45 RD 16	16	45	33	13	34	40	—	18	18	M 8x1	RD 16	0.5-10	GS 25
412016*	20x40 RD 16	20	40	30	18	28	50	—	23	23	M 10x1	RD 16	0.5-10	GS 25
412025	20x50 RD 25	20	50	38	18	42	50	—	23	23	M 10x1	RD 25	1-16	E 25
412032	20x60 RD 32	20	60	48	18	50	50	—	23	23	M 10x1	RD 32	2-20	E 32
412040	20x66 RD 40	20	66	52	22	63	50	—	23	23	M 10x1	RD 40	3-26	E 40
412525*	25x50 RD 25	25	50	38	18	42	58	—	25	25	M 14x1.5	RD 25	1-16	E 25
412532*	30x60 RD 32	25	60	48	18	50	58	—	25	25	M 14x1.5	RD 32	2-20	E 32
413025	30x75 RD 25	30	75	63	22	50	68	30	28	30	M 18x1.5	RD 25	1-16	E 25
413032	30x75 RD 32	30	75	63	22	50	68	30	28	30	M 18x1.5	RD 32	2-20	E 32
413040	30x75 RD 40	30	75	61	22	63	68	30	28	30	M 18x1.5	RD 40	3-26	E 40
414025	40x75 RD 25	40	75	63	22	42	83	—	32.5	—	M 22x1.5	RD 25	1-16	E 25
414032	40x75 RD 32	40	75	63	22	50	83	—	32.5	—	M 22x1.5	RD 32	2-20	E 32
414040	40x75 RD 40	40	75	61	22	63	83	—	32.5	—	M 22x1.5	RD 40	3-26	E 40
415040*	50x75 RD 40	50	75	61	30	63	98	—	35	—	M 28x1.5	RD 40	3-26	E 40
416040*	60x75 RD 40	60	75	61	30	63	123	—	42.5	—	M 42x1.5	RD 40	3-26	E 40

ESTILO RD/ORTLIEB

Part No.	Description	D	A	B	C	E	F	G	H	I	T	Collet	Range	Wrench
422025*	20x57 RDO 25	20	57	43	18	43	50	—	23	23	M 10x1	RDO 25	1.5-16	HSO 25
422525*	20x62 RDO 25	25	62	48	18	43	58	—	25	25	M 14x1.5	RDO 25	1.5-16	HSO 25
423025	30x57 RDO 25	30	57	43	22	43	68	30	28	30	M 18x1.5	RDO 25	1.5-16	HSO 25
423035	30x75 RDO 35	30	75	59	22	60	68	30	28	30	M 18x1.5	RDO 35	1.5-25	HSO 35
424025*	40x57 RDO 25	40	57	43	22	43	83	—	32.5	—	M 22x1.5	RDO 25	1.5-16	HSO 25
424035	40x75 RDO 35	40	75	59	22	60	83	—	32.5	—	M 22x1.5	RDO 35	1.5-25	HSO 35
424044	40x90 RDO 44	40	90	73	22	72	83	—	32.5	—	M 22x1.5	RDO 44	3.5-32	HSO 44
425035*	50x75 RDO 35	50	75	59	30	60	98	—	35	—	M 28x1.5	RDO 35	1.5-25	HSO 35
425044	50x90 RDO 44	50	90	73	30	72	98	—	35	—	M 28x1.5	RDO 44	3.5-32	HSO 44
426044*	60x90 RDO 44	60	90	73	30	72	123	—	42.5	—	M 42x1.5	RDO 44	3.5-32	HSO 44

ESTILO RDG/TG

Part No.	Description	D	A	C	E	F	H	T	Range	Wrench
4040100	40x108 RDG 100	40	108	22	62	83	32.5	M 22x1.5	3/32-1	E 40

*Los artículos que no están en existencia se dan bajo solicitud especial.