

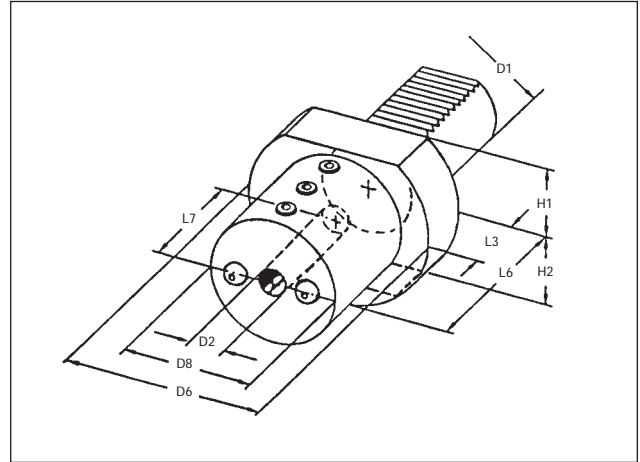
## BORING BAR HOLDERS

PER VDI 3425

DIN 69880

## Form E2

Part No.	D1	D2	D6	D8	H1	H2	L3	L6	L7
553012	30	1/2"	68	55	28	30	22	60	51
553016	30	5/8"	68	55	28	30	22	60	51
553020	30	3/4"	68	55	28	30	22	60	51
553025	30	1"	68	55	28	30	22	60	51
553032	30	1-1/4"	68	55	28	30	22	75	61
554012	40	1/2"	83	55	32.5	—	22	75	61
554016	40	5/8"	83	55	32.5	—	22	75	61
554020	40	3/4"	83	55	32.5	—	22	75	61
554025	40	1"	83	55	32.5	—	22	75	61
554032	40	1-1/4"	83	83	32.5	—	22	75	61
555012	50	1/2"	98	68	35	—	30	90	76
555016	50	5/8"	98	68	35	—	30	90	76
555020	50	3/4"	98	68	35	—	30	90	76
555025	50	1"	98	68	35	—	30	90	76
555032	50	1-1/4"	98	68	35	—	30	90	76



NOTE: Flat on lower side of 30mm shank tools.

## STEEL PLUGS

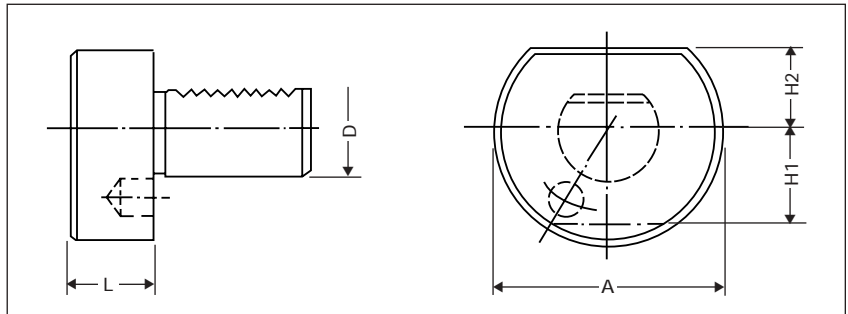
PER VDI 3425

DIN 69880

## Form Z2

Part No.	D	L	A	H1	H2
611640*	16	13	40	23	18
612050*	20	16	50	23	23
612558*	25	16	58	25	25
613068	30	16	68	30	28
614083	40	20	83		32.5
615098	50	20	98		35
616023*	60	20	123		42.5

NOTE: Stock items available upon special request.



## MORSE TAPER ADAPTERS

PER VDI 3425

DIN 69880

## Form F For Shanks With Tang

Part No.	D	Tool Shank	L1	L2	A	H1	H2
623001	30	1	27		68	30	28
623002	30	2	27		68	30	28
623003	30	3	45		68	30	28
624001	40	1	36	22	83	32.5	
624002	40	2	36	22	83	32.5	
624003	40	3	36	22	83	32.5	
624004	40	4	80	22	83	32.5	
625002	50	2	36	30	98	35	
625003	50	3	36	30	98	35	
625004	50	4	50	30	98	35	

